

**UZMAR<sup>®</sup>**

# **PUSHER TUGBOATS**

**RApide 4600**





# **AWARD**

## **WINING SHIPYARD**

World's Fastest Tugboat Builder,  
An Unmatched Record!



# PUSHER TUGBOATS

## RApide 4600

**UZMAR**<sup>®</sup>

|   |  |
|---|--|
| <b>LOA</b>                                  | : 46.50 m                                    |
| <b>BEAM</b>                                 | : 16.50 m                                    |
| <b>GROSS TONNAGE</b>                        | : > 500 GT                                   |
| <b>DRAUGHT, MAX</b>                         | : 2.80 m                                     |
| <b>[depends on propeller dia]</b>           |  |
| <b>MAX.SPEED</b>                            | : 13.00 knots                                |
| <b>BP, MAX</b>                              | : 65.00 ton                                  |
| <b>MAIN ENGINES</b>                         | : Diesel Electric/ 3 x 1.800 ekW @ 1.000 rpm |
| <b>PROPULSION</b>                           | : 3 x FP Azimuth Thrusters                   |
| <b>GENERATOR</b>                            | : Min. 2 x 118 ekW (based on load analysis)  |
| <b>FIRE FIGHTING</b>                        | : Opt.                                       |
| <b>ACCOMMODATION</b>                        | : Up to 18 person                            |
| <b>FUEL CAPACITY (M<sup>3</sup>)</b>        | : 535  |
| <b>FRESH WATER CAPACITY (M<sup>3</sup>)</b> | : 35   |
| <b>GMDSS</b>                                | : A1-A2                                      |



### Features:

- Performance proven shallow draft vessel design.
- Melded with modern CFD analytical capabilities for maximum performance.
- Available in twin, triple, and quadruple screw configurations, with conventional or Z-drive propulsion.
- Enhanced shallow-draft pusher tug designs for major river transportation systems.

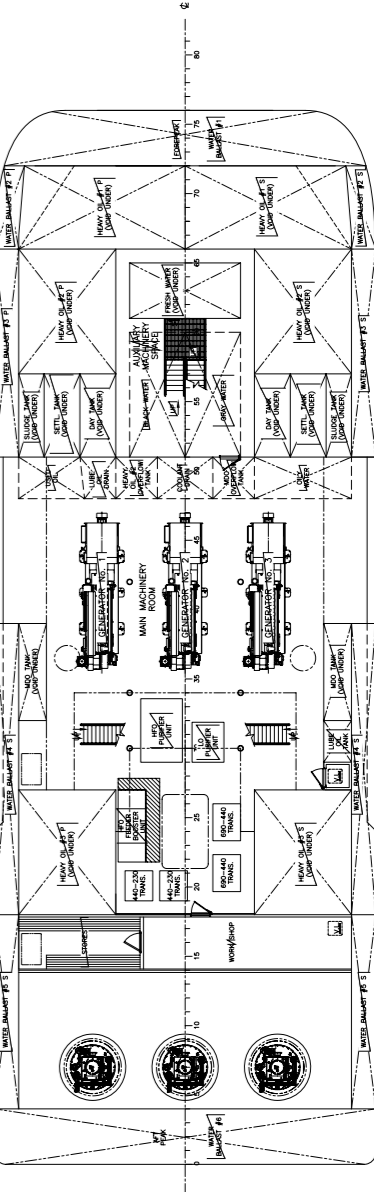
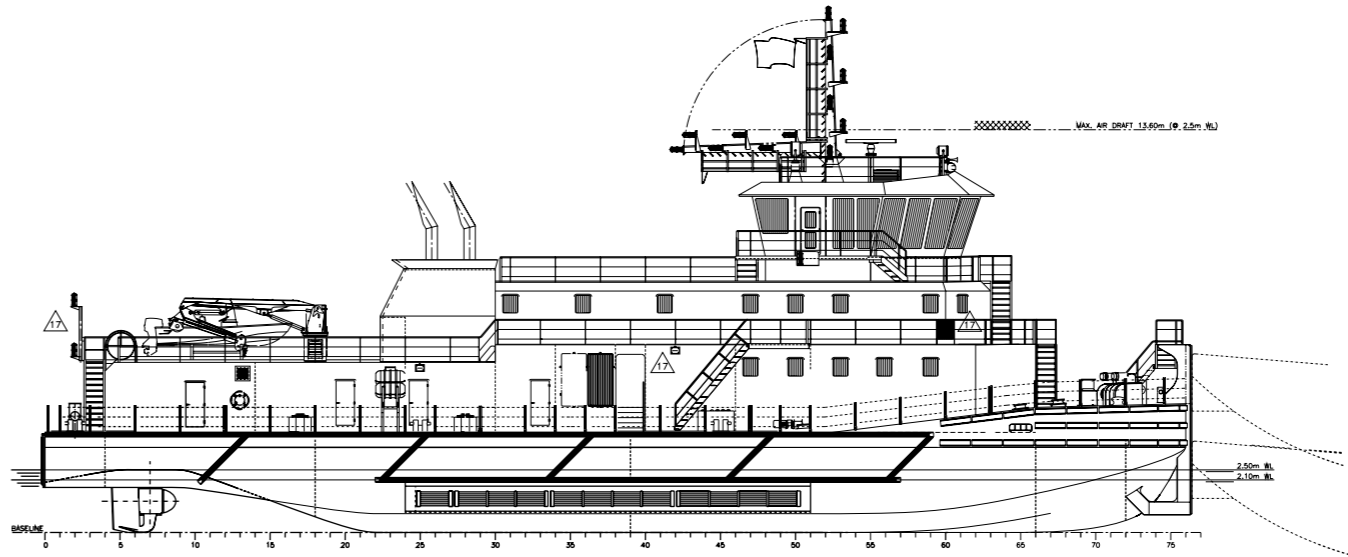
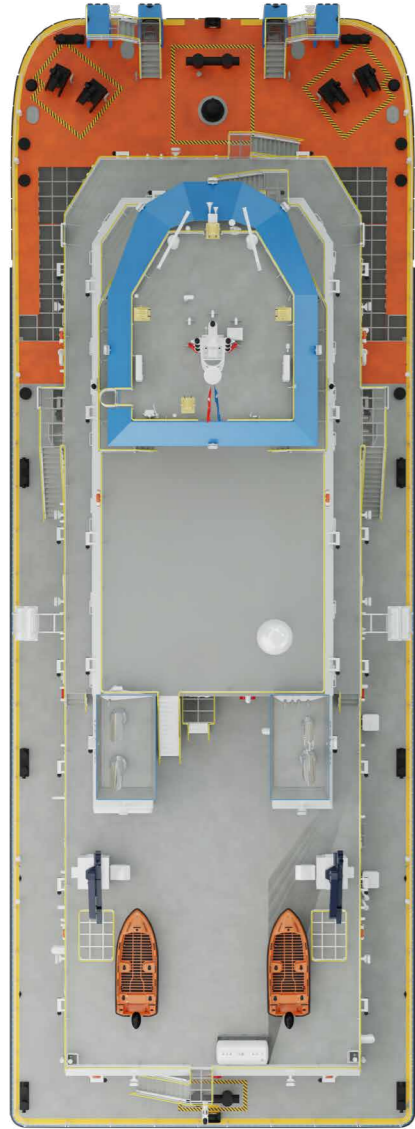


**ROBERT ALLAN**  
Naval Architects & Marine Engineers

# PUSHER TUGBOATS

RApide 4600

UZMAR®







# UZMAR®

## **UZMAR GEMİ İNŞA SAN. VE TİC. A.Ş.**

Kocaeli Serbest Bölgesi Sepetlipınar SB Mah.  
102. Cad. No:14-16 41090 Başiskele, Kocaeli, TURKEY  
Phone : +90 (262) 341 45 10 (pbx)  
Fax : +90 (262) 341 45 12  
E-Mail : info@uzmar.net  
Web : www.uzmar.com

## **İSTANBUL OFFICE**

Caddebostan Mah. Operatör Cemil Topuzlu Cad.  
Kutmen Apt. No:60/2 D:7 Kadıköy İstanbul, TURKEY  
Phone : +90 (216) 405 21 01 (pbx)  
Fax : +90 (216) 405 21 04  
E-Mail : sales@uzmar.net  
Web : www.uzmar.com